



DN9331

Software

Updates

Instruction Notes



There are three methods that can be used to update the DN9331 Rapide depending on which version of software the unit is currently running. This document covers the following ways of upgrading your DN9331 Rapide

- From Pre Version 4.00 Rapide software using Elgar and a TFTP server
- From Post Version 4.00 Rapide software using TFTP Server
- From Post 4-07 software using the upgrader mechanism included with PRO6 and XL8

PREPARING YOUR PC (APPLIES TO ALLUPGRADE METHOD)



SOFTWARE REQUIRED

- Elgar V2.64 (Downloaded from the Klark Teknik Web Site, only required if updating from a pre Ver 4-00 software version).
- Rapide Software (Downloaded from the Klark Teknik Web Site). this includes the following files.

rapide_ramdisk.gz
rapideapps.tar
unmanagedredboot.bin
vmlinux26.bin

- TFTP Server Software (Software such as Solar Winds)

TFTP-SERVER SETUP

1/ Install a TFTP server onto your computer for this document the Solar Winds server will be shown, but set up of the basic configurations is the same for most servers.

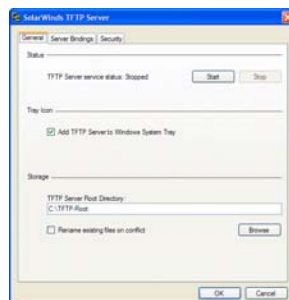
Once installed Solar winds will create the following directory in your root drive.

C:\TFTP-Root

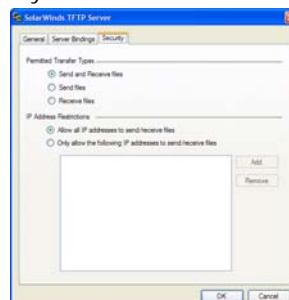
Create in this folder a folder called [XL8Upgrade](#)
Create within this a directory called [rapide](#) and copy the 4 Rapide files into this directory.
(Please note the directory names are case sensitive)

Make sure that in the Solar winds configuration the following is set correctly

- 1 – The TFTP Service Root Directory should just read c:\TFTP-Root



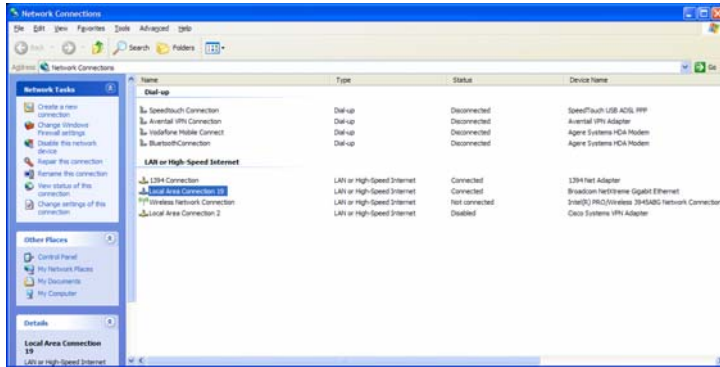
- 2 - The TFTP Server Security should be set to Transmit and Receive, All other settings should remain as default.



PC IP ADDRESS SET-UP

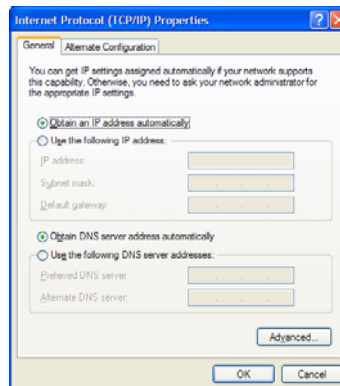
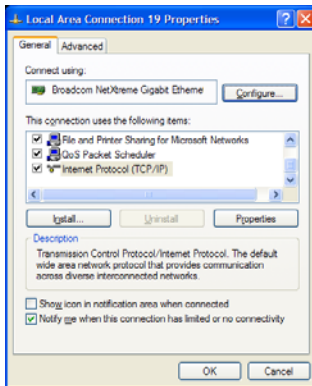
The Rapide unit once running 4.04 or later software has an upgrade routine built in that knows to look for a TFTP service located at an IP address of 192.168.20.3

To change the IP address of your computer to 192.168.20.3 with a Netmask of 255.255.0.0. open up your Network connections window.



Right Click on your network connection (In this case it is Local Area Connection 1) and click on properties.

Scroll down the list until you can see Internet Protocol (TCP/IP), highlight this and click on properties.

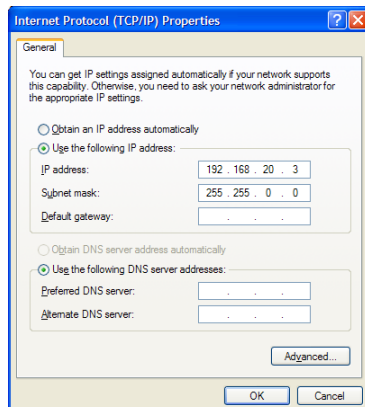


Enable the Use the following IP address and then fill in the IP address and Netmask

IP – 192.168.20.3

Netmask 255.255.0.0

Click On OK and windows should then set up the IP address accordingly



UPDATING FROM SOFTWARE PRE VER 4.00



In Addition to Solar Winds you will also need to install Elgar Ver 2.64 Down load the software from the Klark Teknik web site, click on the executable installation file and follow the on screen instructions.

Make a note of the IP address of the rapide shown in the setup menu. If this is different to the default address 192.168.1.128 then you will need to substitute this number into the web addresses used later.

On the RAPIDE:

Find the IP address of your RAPIDE from the network screen, and write it down.

Switch off your RAPIDE, and connect it directly to the PC with a single Ethernet cable – there should be no other Ethernet connections on the RAPIDE.

Press and hold the Home key, and then power on your RAPIDE – keep the Home key pressed until you get to the Test menu.

Press Home until the display shows 'Update s/w' – DO NOT TURN THE ENCODERS YET!

On the PC:

Start Elgar, and go to the 'Tools->Upgrade Device Firmware'

Type in the IP address of the RAPIDE you wrote down earlier

Press 'Test Connection'. Elgar will try and find the RAPIDE on the Ethernet network. If successful, the Next button will become active. If not successful, check the Ethernet connection and IP address and try again.

Press the Next button, and select the file you are updating to the RAPIDE, normally

c:\TFTP-Root\XL8Upgrade\rapide\rapide_ramdisk.gz

The next steps must be performed quickly – you must wait only two or three seconds in between them!

Turn the middle encoder on the RAPIDE, followed by the right encoder. Note that the screen will NOT show 'y' when you turn the right encoder – this is a bug that is fixed during this update

Wait three seconds only!

Press 'Program' on the PC, and verify that the PC is sending data.

The RAPIDE should flash the Ethernet light to show it is receiving data, but will otherwise be unresponsive – the home key should NOT change the display. Programming will take around one minute to perform. When complete, all the LEDs on the RAPIDE will light, then extinguish; at this point, re-power the RAPIDE.

Start up Solar Winds so that the tab is open and then also start a web browser window.

In your web browser type the following web addresses, in this order, **fully allowing the Rapide to reboot** after each step:

<http://192.168.1.128/cgi-bin/ftpredboot.cgi>

<http://192.168.1.128/cgi-bin/ftpkernel.cgi>

<http://192.168.1.128/cgi-bin/ftpapps.cgi>

Note: If the Rapide IP address is different substitute this number instead of the 192.168.1.128 shown above.

Finally, power cycle the Rapide. Verify that the Rapide version reads V4.08 and the console version reads V1.11.

UPDATING FROM SOFTWARE POST VER 4.00 USING A COMPUTER



Connect the Rapide to the computer.

Make a note of the IP address of the Rapide, shown in the setup menu. If this is different to the default address 192.168.1.128 then you will need to substitute this number into the web addresses used later.

Change the IP address of the computer to 192.168.20.3 with a Netmask of 255.255.0.0

Start up the TFTP Server.

In your web browser type the following web addresses, in this order, **fully allowing the Rapide to reboot** after each step:

<http://192.168.1.128/cgi-bin/ftpredboot.cgi>

<http://192.168.1.128/cgi-bin/ftpramdisk.cgi>

<http://192.168.1.128/cgi-bin/ftpkernel.cgi>

<http://192.168.1.128/cgi-bin/ftpapps.cgi>

Note: If the Rapide IP address is different substitute this number instead of the 192.168.1.128 shown above.

Finally, power cycle the Rapide. Verify that the Rapide version reads V4.08 and the console version reads V1.11.



Rapide units that have been supplied with Pro6 consoles should all be able to upgrade using the console updater method.

Rapide units that have been supplied with XL8 systems running pre 1-10 that have only had their application and kernel software updated may not be seen by the updater mechanism. In this case you will need to update the Ramdisk using the method above. The unit may then be connected to the console for updating or the update completed using the above computer method.

PRO6 and XL8

Connect the Rapide to the Ethernet Control port 1 of the console surface.

Start the updater

Select the DN9331 from the screen and click on update.

Once completed power cycle the console surface and Rapide



Midas Klark Teknik Ltd, Klark Industrial Park, Walter Nash Road,
Kidderminster. Worcs. DY11 7HJ. England.

Tel: +44 1562 741515 Fax: +44 1562 745371

www.klarktechnik.com | www.ktsquareone.com